



# Wujal Kaban December 2021

# Council's Christmas Closing Dates

Council will begin their Christmas break starting on Friday 24 December 2021 and returning to normal operating hours 04 January 2022. During this time the Essential Services Team will be doing their daily checks and maintenance and there will be a skeleton crew working over the period looking after other urgent works as required.

Wujal Wujal Aboriginal Shire Council thank all staff and community members for all their hard works, patience and understanding through what has been, at times, a very challenging year. We wish you all a very merry and safe Christmas and look forward to kicking goals next year.

## Justice Group Closing Dates

The Wujal Justice Group will be closing On Wednesday 22 December 2021 and returning to normal operation Monday 17 January 2022. During this period Joh and the elders will be available for emergencies but no client programs will be running.

We would like to wish everyone and safe and merry Christmas and New Year's.



Never miss an issue!! If you would like the **monthly** Wujal Kaban sent directly to your email address come and see Kylie at the IKC or email [kylie@wujal.qld.gov.au](mailto:kylie@wujal.qld.gov.au)

# GOVERNMENT CHAMPION VISIT



The Queensland Government is committed to increasing the capability of government to deliver innovative, efficient, effective and integrated services for Aboriginal people and Torres Strait Islander people across Queensland, particularly to those who live in remote and discrete Indigenous communities. The champions program brings together CEOs of departments and government ministers to partner with individual communities.

The Government Champion program provides an opportunity for Chief Executives of Queensland Government agencies to work together with identified communities towards improving life outcomes for Aboriginal people and Torres Strait Islander people, in a collaborative partnership. The complementary program, Queensland Ministers will act as individual champions for discrete Aboriginal and Torres Strait Islander communities. Under the Ministerial Government Champion's program, ministers work closely with mayors and community leaders from their partner community to engage more effectively with Cabinet on the opportunities and challenges facing Aboriginal and Torres Strait Islander communities.

Wujal Wujal Champions are Honourable Leeanne Enoch MP Minister for Communities and Housing, Minister for Digital Economy and Minister for the Arts and Mr Jamie Merrick Director-General, Department of Environment and Science. Both attended community in early November and met with community leaders, Mayor and the acting CEO to discuss how they can better help the community to grow and work with State Government. Leeanne and Jamie presented the community with donated sporting equipment paid for by the staff in their offices. The community would like to express their gratitude for this amazing gift.



Leeanne's responsibilities include community care, community recovery, community services, social inclusion, homelessness, housing services, cyber security operations and management, digital economy, open data, government information and communication technology policy and planning, shared services systems, archives and the arts.



# STORM SEASON PREPARATION

When it comes to extreme weather events in Queensland, it's not a matter of 'if' but 'when'. Get Ready Queensland is a year-round program helping all Queenslanders prepare for natural disasters. Being prepared before a disaster hits could be the difference between staying safe or putting yourself and those you love in danger.

## STEP 1: UNDERSTAND YOUR RISK

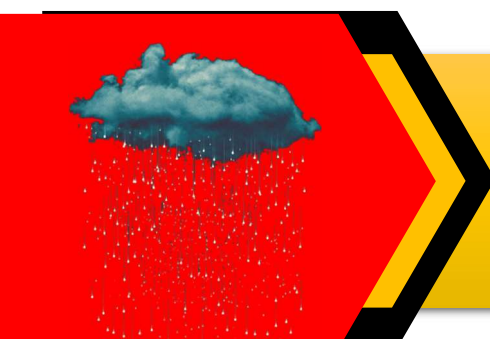
The most common events that occur in Queensland are flood, storm, cyclone, storm surge and bushfires. In recent years Wujal has experienced both minor and major flooding events which cuts off access from the community for days at a time as well as seasonal storms and some close cyclone calls. In recent times there are also new risks like pandemics and heatwaves. Being prepared will reduce the impact of disaster on yourself, your loved ones, family and finances. The first step to being ready is knowing what, when and where a disaster might happen and how bad it might be and if you or your family will be affected.

## STEP 2: PREPARE A HOUSEHOLD

### EMERGENCY PLAN

A household emergency plan helps everyone in the house know what to do and who to contact if disaster does strike. The plan should include contact details of everyone who lives in the house and also contact details for emergency services such as police, council, health clinic, SES, rural fire brigade. Medical and medication requirements of household members as well as any special requirements such as mobility aids and special assistance requirements.

A household emergency plan should also have the location that the emergency kit is stored and the location of the emergency place of refuge which in Wujal's case is the kindergarten building.



Be prepared for disaster season. Take a look at the Get Ready Queensland website for advice, information and resources.

# get ready QUEENSLAND

## STEP 3: PACK AN EMERGENCY KIT

An emergency kit is a collection of items that should be able to sustain your household for a minimum of **three days** in the event of a disaster. It should be kept in a sturdy, waterproof container and stored in a safe place that is easily accessible if disaster strikes. The kit should include the following items:

- First aid kit
- Sturdy gloves
- Torch
- Sanitiser
- Essential toiletries
- Face masks
- Phone/charger/battery pack
- Drinking water (min 10L/person)
- Important documents
- Tissues
- Wipes
- Spare batteries
- Can opener
- Non-perishable food
- Battery operated radio
- USB with important documents, photos etc.

An evacuation emergency kit is a small collection of items that you can grab and go if you have to evacuate the house in an emergency. The kit should be a backpack or duffle bag and be able to sustain you while you stay at an evacuation center or with family and friends. The kit should include the following items:

- First aid kit
- Sturdy gloves
- Torch
- Sanitiser
- Essential toiletries
- Face masks
- Phone/charger/battery pack
- Drinking water
- Extra supplies for infants
- Bedding
- USB with important documents, photos etc.
- Important documents
- Medication
- Wipes
- Spare batteries
- Can opener
- Non-perishable food
- Battery operated radio
- Spare clothes
- Spare cash
- Valuables



Since 2011, Queensland has been hit by more than 80 significant natural disasters resulting in devastating loss of life and leaving a recovery and reconstruction bill of more than \$16.1 billion. Some natural disasters such as cyclones, floods and fire are largely determined by your location.



# Community Christmas Party



The community Christmas party will be held 08 December 2021 at the PCYC hall from 10am – 2pm. This year there will be snow cones, hamburgers and coleslaw and fruit salad. The jolly man himself Santa will be coming and bringing gifts to all the kids. To make sure that all children receive a present please see the Justice Group staff to put their names down. There will be something for everyone from tie dying, kiddies corner, soap and tile decorating along with lucky door prizes.

This is a Covid safe event and QR codes and manual check in will be available. You can even get your vaccination if you haven't already.



Rikkeisha Hooker  
Wujal Christmas 2013  
Photo: Christine Howes

COOKTOWN DISTRICT COMMUNITY CENTRE INVITES YOU TO

## WUJAL WUJAL FAMILY FIESTA FUN DAY

KIDS CORNER, NOVELTY EVENTS, FREE LUCKY DOOR PRIZES, LUNCH, SNACKS & SNO-CONES BRING THE WHOLE FAMILY - ALL ARE WELCOME

NOTE THE CHANGE OF DATE AND VENUE  
10am to 2pm 8th December 2021  
Wujal Wujal Community Hall  
A FUN DAY OUT FOR THE WHOLE FAMILY ON THE SCHOOL HOLIDAYS



What do snowmen use to make snow babies?  
Snowballs.

# Year 12 School Formals



Asheruking Walker  
and Lennik  
Henderson Yougie and  
Shannon Shaun  
accompanied by  
Jaquwan and Dominic



Shannon Shaun  
and date

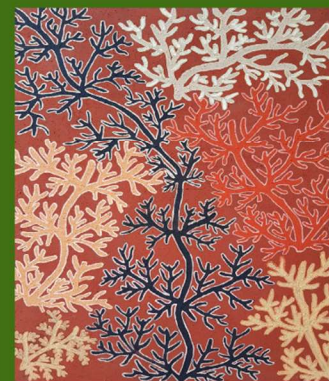


Takayda Schrieber  
and Taylon Keys

Class of 2021



Bana Yirriji Art Centre has been busy the last few months with CIAF fashion show and CIAF online platform. Our beautiful earth pigment artworks are featured in this year's Cairns Indigenous Art Fair (CIAF 2021). Artworks are available via the online store: <https://shop.ciaf.com.au> until the 10th Dec 2021.





# Bits and Bobs

## Women's Health Week

We celebrated Women's Health in Wujal Wujal on Tuesday 9<sup>th</sup> November, the ladies enjoyed lunch together with guest speakers discussing women's health issues. Incentive gift bags were available to ladies that completed their Women's Health Check-up. A great day was enjoyed by all.



## DEADLY SHIRTS

The art centre now have deadly shirts available in adult and kids sizes with designs from local artist. Adult sizes \$40 and kids sizes \$30. Come in and support our local artists such as Anne Nunn, Lila Creek, Jarrett Bassani, Davina Nunn.



Women's Health Week focuses on the importance of maintaining good health and wellbeing for all women and girls and is a timely reminder for everyone to make their health a priority.

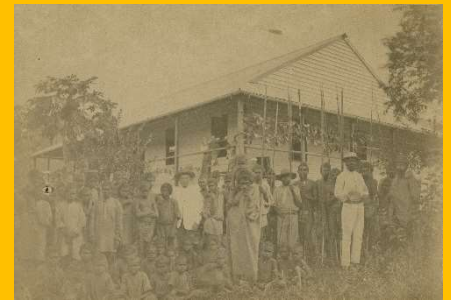


## 2021 Resilient Australia Awards

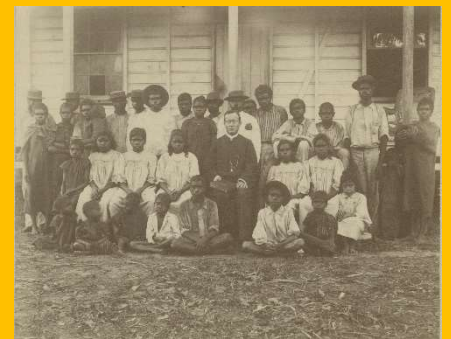
Wujal Wujal Aboriginal Shire Council took out the first-place award for the Local Government Section of the State's Resilient Australia Awards for their Elder's and Vulnerable Person's Initiative. We are also in the running for the National award being presented in Melbourne 08 December. Big congratulations and best of luck to WWASC.

### PICTURES OF WUJAL HISTORY

Bloomfield Mission



Pastor Herloin and local bama



Bloomfield Mission locals



## SNAKE WARNING

It's snake breeding season and with the warm weather the snakes are active. There have been a few snake related dog deaths in community recently and lots of snake sightings. Please be careful and keep your yard clean and tidy and lawns mowed to prevent snakes hiding on your property. Make sure your taps are completely turned off and any rat/mice issues are dealt with to minimise snake food sources. If you do see a snake it is advised that you leave it alone as most snake bites occur when you try to move or kill the creature.

**Christmas Secret Shape** 2009

Find all the listed words in this grid - they can run in any direction, even backwards or diagonally, but always in a straight line. Then colour in the left-over letter squares to discover a hidden shape!

T	B	P	F	E	S	R	A	T	S	C	T	O	G	
N	A	E	C	I	F	C	A	R	D	A	S	U	N	M
E	P	S	L	E	D	M	A	N	H	C	R	I	B	M
S	D	V	E	L	U	Y	X	T	T	T	S	I	L	A
E	E	B	W	I	S	H	A	U	R	A	E	P	V	R
R	E	F	W	S	M	D	L	W	V	A	N	S	E	I
P	C	R	I	A	F	J	P	Y	D	N	I	G	H	T
D	O	A	T	R	W	G	A	A	B	P	N	E	V	E
E	W	T	N	O	T	R	P	D	R	A	K	F	W	W
C	E	E	I	D	O	I	E	I	M	W	U	T	O	A
E	L	T	X	B	Y	N	R	L	U	N	O	B	L	E
M	G	S	E	M	S	C	H	O	R	S	E	V	L	E
B	N	O	K	R	A	H	A	H	D	O	V	E	S	E
E	I	P	E	E	H	S	T	N	E	M	A	N	R	O
R	J	B	E	T	H	L	E	H	E	M	E	R	C	Y

© Denise Sutherland

AWE	NOBLE
BAUBLE	ORNAMENTS
BELLS	PAPER HAT
BETHLEHEM	PEAR
CANDY CANE	POST
CARD	PRESENT
CRIB	RITE
DECEMBER	ROBE
DOVES	SANTA
DRUM	SHEEP
ELVES	SILVER
EVE	SING
FAIR	SLED
FIR	STARS
FUN	SUN
GRINCH	TOP
HARK	TOYS
HOLIDAY	TRAYS
ICE	TREE
JINGLE	WISH
LIST	WRAP
MANGER	XMAS
MERCY	YULE
NIGHT	

# December Community Calendar

Sun	Mon	Tue	Wed	Thu	Fri	Sat
Nov 29, 2021	29	30	Dec 1	2	3	4
		Pama Futures - Community Consultation End of School Year Presentation		School Parent Teacher Meeting Last day of kindergarten	Last day of school	
5	6	7	8	9	10	11
			Family Fiesta Fun Day - I			
12	13	14	15	16	17	18
19	20	21	22	23	24	25
			Justice Group Closure		Christmas Eve	Council Christmas Closure Christmas Day
26	27	28	29	30	31	Jan 1
Council Christmas Closure Justice Group Closure Boxing Day	Public holiday observed in	Public holiday observed in			New Year's Eve	New Year's Day